



ZÁKLADNÍ ŠKOLA OLOMOUC

příspěvková organizace

MOZARTOVA 48, 779 00 OLOMOUC

tel.: 585 427 142, 775 116 442; fax: 585 422 713

email: kundrum@centrum.cz; www.zs-mozartova.cz



evropský
sociální
fond v ČR



EVROPSKÁ UNIE



MINISTERSTVO ŠKOLSTVÍ,
MLÁDEŽE A TĚLOVÝCHOVY



OP Vzdělávání
pro konkurenceschopnost

INVESTICE DO ROZVOJE VZDĚLÁVÁNÍ

Projekt: ŠKOLA RADOSTI, ŠKOLA KVALITY

Registrační číslo projektu: CZ.1.07/1.4.00/21.3688

EU PENÍZE ŠKOLÁM

Operační program Vzdělávání pro konkurenceschopnost



ZÁKLADNÍ ŠKOLA OLOMOUČ

příspěvková organizace

MOZARTOVA 48, 779 00 OLOMOUČ

tel.: 585 427 142, 775 116 442; fax: 585 422 713

email: kundrum@centrum.cz; www.zs-mozartova.cz

| | |
|---------------------------|-------------------------------------|
| Autor: | <i>Mgr. Lenka Panglová</i> |
| Vzdělávací oblast: | <i>Jazyk a jazyková komunikace</i> |
| Vzdělávací obor: | <i>Anglický jazyk</i> |
| Vyučovací předmět: | <i>Anglický jazyk</i> |
| Ročník: | <i>7.</i> |
| Tematická oblast: | <i>Gramatické jevy</i> |
| Téma hodiny: | <i>Articles</i> |
| Označení DUM: | <i>VY_32_INOVACE_27.13.PAN.AJ.7</i> |
| Vytvořeno: | <i>04. 03. 2014</i> |

Articles

A/AN - indefinite

- = **one** – only with countable nouns in singular

Example *one boy = a boy*

- = **some**, not specific

Example *some dog = a dog*

- **unknown**, mentioned for the first time

Example *When I went home I met a girl. The girl was perfect.*

- **with jobs** *Example* *He's a doctor.*

- **in phrases**

There is a.../Is there a...

have a shower

take a bus ...

Articles

THE [ðə/ði:] - definite

- **specific**, exact

Example Can you pass me **the black T-shirt over there**, please?

- **known**, mentioned before

Example We were watching a film yesterday evening. **The film was amazing** but Pete fell asleep after 15 minutes.

- **superlatives** **the funniest, the most** important
- **ordinal numbers** **the first** memory, **(the) 22nd** May
- **the only of this kind** **the Prime Minister** (Britain has only one)
- **musical instruments** I don't **play the flute**.
- **in phrases** **at the weekend ...**

Definite (the) or indefinite (a/an)

Oh, you've got beautiful new dress. Where did you buy it?

All students are standing and waiting for their teacher to enter classroom.

A: Can I borrow pen, please?

... (after the lesson)

B: Can you give me pen back, please?

THE with place names:

- Rivers, seas, oceans, canals →
- Theatres, cinemas, museums, galleries →
- With OF →

~~THE~~ with place names:

- Bridges →
- Streets, roads →
- Parks, squares →
- With possessive 'S →

THE with rivers, seas, oceans, canals

- rivers

the (river) Thames



- seas

across the Mediterranean (sea)



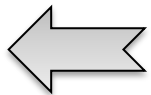
- oceans

in the Atlantic (ocean)



- canals

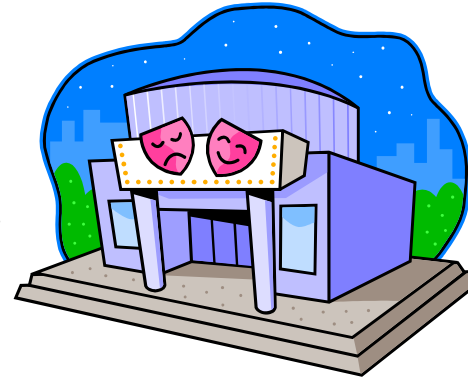
the Suez Canal



THE with theatres, cinemas, museums

- theatres

the National Theatre in Prague



- cinemas

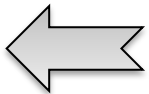
the Odeon (cinema)



- museums and galleries

the British Museum

the National Gallery



THE with OF

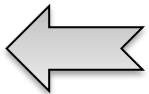
*the Tower **of** London*



*the City **of** London*



*the Bank **of** England*



~~THE~~ with bridges

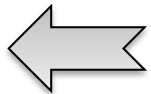
- bridges

~~X~~ *Tower bridge*

- **Attention!**

The Golden Gate Bridge

The Severn Bridge



~~THE~~ with streets and roads

- streets and roads

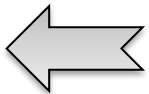
~~X~~ *on Churchill Road*

~~X~~ *in Oxford Street*

- **Attention!**

The High Street

The Whilehall

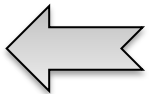


~~THE~~ with parks and squares

- parks and squares

~~X~~ *Trafalgar Square*

~~X~~ *Hyde Park*

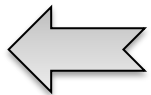


~~THE~~ with possessive 'S

- possessive 'S

~~X~~ *Nelson's Column*

~~X~~ *at Durrant's Hotel*



THE, A, AN or --



- We saw Eiffel Tower in Paris.
- What did you see in Globe Theatre?
- Queen lives in Buckingham Palace.
- Is there bank on Chester Road?
- Take second turning on the right.
- There's underground station opposite hotel.
- There's clinic on the right. Go past clinic.



ZÁKLADNÍ ŠKOLA OLOMOUC

příspěvková organizace

MOZARTOVA 48, 779 00 OLOMOUC

tel.: 585 427 142, 775 116 442; fax: 585 422 713

email: kundrum@centrum.cz; www.zs-mozartova.cz

Seznam použité literatury a pramenů:

HUTCHINSON, T. *Project 3 Third Edition Student's Book*. Oxford : OUP, 2008, ISBN 978-0-19-476310-3. s. 45-47.

HUTCHINSON, T., EDWARDS, L. *Project Third edition - Workbook + CD-ROM*. Oxford : OUP, 2008, ISBN 987 0 19 476355 4. s. 71.

Použité zdroje:

Obrazový materiál je použit z galerie obrázků a klipartů Microsoft Office.